

# **RKM** **ROKONMA (M) SDN BHD**

**MANUFACTURER OF CONVEYOR  
IDLER ROLLERS & ACCESSORIES**



## COMPANY OVERVIEW

- **Founded in Malaysia in 1987**, we are a manufacturer of belt conveyor accessories, including conveyor rollers, brackets, and the related components.
- Rokonma Malaysia - 74,227.93 sq. ft production Area with 50 staff.
- Supplying to both local and international markets such as **China, Hong Kong, Taiwan, Southeast Asia, Middle East, Africa, Australia, Europe, and other international markets.**
- Our production capacity exceeds **500,000 rollers and 3,000 tons of brackets annually.** Approximately **2,500 rollers per day** supporting large-scale projects and consistent supply demands.
- We are capable of manufacturing **rollers and drive & driven pulleys** in a wide range of sizes, up to **1,000 mm in diameter and 3,000 mm in length.**
- Our products are widely used in bulk material handling systems across a broad range of industries, including **power plants, ports, mining, quarries, steel, cement, food industry, airport and automation handling.**

# ISO 9001: 2015 – CERTIFICATION



**Certificate of Registration**

**ROKONMA (M) SDN BHD**

2-5, JALAN BUKIT BADAQ, SUBANG NEW VILLAGE,  
40150 SHAH ALAM, SELANGOR DARUL EHSAN, MALAYSIA

has been assessed and Certified by Otabu Certification Pvt. Ltd.  
as meeting the requirements of:

**ISO 9001:2015**  
**Quality Management System**

For the following scope of activities:

**PROVISION OF MANUFACTURING OF CONVEYOR ROLLERS AND  
STEEL FRAMES**

Date of Initial Registration: 25 March 2025	1st Surveillance Due: 24 March 2026
Date of this Certificate: 25 March 2025	2nd Surveillance Due: 24 March 2027
Certificate Expiry: 24 March 2026	Issue & Revision No: 01 & NA

(Validity of the certificate is conditionally linked by positive results of surveillance audits and fulfil the conditions set out in the certification agreement which the certified company is committed to undergo)

IAF Code: 17  
**Certificate No:- 0325Q274225**

To Verify this Certificate please visit at [www.otabucert.com](http://www.otabucert.com)



Dr. Anita Gupta  
(Managing Director)

**OTABU CERTIFICATION PRIVATE LIMITED**  
(Accredited by Standards Council of Canada)  
FOL : 66 Elms Drive, Oxford, United Kingdom, OX3 9NL

This Certificate is registered by Otabu Certification Pvt. Ltd. an Accreditation Body of SCC (Standards Council of Canada) for Management System Certificates.  
The Certificate of registration remains the property of Otabu Certification Pvt. Ltd. and shall be returned immediately upon request.  
Email:- [info@otabucert.com](mailto:info@otabucert.com) website:- [www.otabucert.com](http://www.otabucert.com)

## LOCATIONS

We do have manufacturing, sales and support facilities in Malaysia, Australia, USA, Middle East Region, Thailand, Indonesia and Philippines



## AFFILIATE EPC CONTRACTOR



- MINCORE is our affiliate EPC contractor.
- MINCORE specialise in projects and services to the Minerals Processing and Building Material Industries.
- MINCORE executed projects across Australia, South East Asia, Indonesia, Laos, Malaysia and West Africa.
- RKM works with MINCORE in Australia market. Successfully established Australia market over the period of 15 years.

<https://mincore.com.au/>

## COMPANY MILESTONES

- 1987 - Established **Rokonma (M) Sdn. Bhd.**
- 1999 - Engaged **SIRIM** to establish test laboratory and quality control.
- 1999 - Completed delivery of 1200BW & 1350BW idlers for **TNB Kapar Power Plant.**
- 2000 - **Rokonma (M) Sdn.Bhd** obtained product certification from SIRIM QAS International Sdn Bhd on conveyor rollers.
- 2008 – Established **Rokonma (Dongguan) Co. Ltd** in Dongguan, China.
- 2011 – Completed delivery of 1800BW idlers for **FMG Port T155 Port Hedland.**
- 2013 – Completed full delivery of 12,000 rollers and frames 1400BW & 1800BW to **TNB Manjung 4 1000MW Power Plant.**
- 2013 – Moved to a new plant in Qishi town, **Dongguan.**
- 2014 – **Rokonma (M) Sdn.Bhd** won the **SIRIM Quality Award** for product quality.

# CLIENTS AND PROJECTS

## Power Generation

- Major power generation companies in Malaysia:  
TNB Kapar, TNB Manjung
- Major power generation companies in China:  
Guangdong Power, Huadian, Guohua, Huaneng power plants.

## Mining and other industries

- Siam Cement Group (Thailand), Lafarge Cement
- BHP Billiton, Rio Tinto, Lihir Gold Mine, FMG Iron Ore Mine, Roy Hill Iron Ore Mine (Australia)
- Leading industrial groups: China Coal Group, Zhen Neng Group, China Resources Cement, TCC, Yadong Cement
- Strategic ports: Fangcheng Port, Zhanjiang Port, Guangzhou Port

# RKM Products on Site

Sl. No.	Customer	End User	Plant	Supply Scope	Idler Diameter	Belt Width	Year of supply
1	Convatech	<b>FMG Port Hedland</b>	<b>Iron ore mines</b>	Idlers including Idler Frames	139 mm	1800 mm	2013
2	TecGates Engineering (M) Sdn. Bhd.	TNB Janamanjung	Coal Power Plant	Idlers including Idler Frames	165 mm	1400, 1800 mm	2013
3	Asia Cement	<b>Asia Cement</b>	<b>Cement plant</b>	Idlers Low Noise	127 , 133 mm	1400mm	2016
4	Italian Thai	EGAT Power	Coal Power Plant	Heavy duty Suspended Rollers	194mm	1800, 2200 mm	2017
5	Dalian Huarui Heavy Industries	Hassyan Power Complex	Coal Power Plant	Idlers including Idler Frames	127, 152mm	1400, 1800 mm	2019
6	Royhill	<b>Royhill</b>	<b>Iron ore mines</b>	Idlers including Idler Frames	152, 194 mm	1800, 2200 mm	2020
7	Andritz	Andritz	Pulp and Paper	Idlers including Idler Frames	194 mm	2200 mm	2022
8	Dalian Huarui Heavy Industries	Hassyan Power Complex	Coal Power Plant	Idlers including Idler Frames	127, 152mm	1400, 1800 mm	2022

# RKM Products on Site

Company	Site	Company	Site
Macquarie Generation	Bayswater Powerstation	Tomago Aluminium Pty Ltd	Tomago
Macquarie Generation	Liddell Powerstation	Hydro Aluminium	Kurri Kurri
Delta Electricity	Mt Piper Powerstation	Austar Coal	Austar Mine
Delta Electricity	Wallerawang Powerstation	BHP Billiton	Mt Arthur Operations
Eraring Energy	Eraring PowerStation	Rio Tinto Port	Cape Lambert
Xstrata Coal	Macquarie Coal Plant	Rio Tinto Port	Dampier
		Rio Tinto	Paraburdoo
Xstrata Coal Xstrata	<b>Baal Bonne Colliery</b>	Anglo Coal	Dawson Mine
Coal Muswellbrook	<b>Centenial Coal Mine</b>	Anglo Coal	Lake Lindsay
Coal	<b>Muswellbrook Coal</b>	Anglo Coal	Geman Creek
Liddell Coal Operations	<b>Mine Liddell Colliery</b>	Sedgman	Coppabella CHPP
Fourmile Mining Group	<b>Rixs Creek Coal</b>	Sedgman	Blair Athol CHPP
Incoships Pty Ltd	Mine Port Services	Sedgman	Red Mountain CHPP
Hitech Quarries	<b>Aus-10 Quarry</b>	Wesfarmers	Curragh
BHP Billiton	<b>Cannington Mine</b>	Qld Magnesia	Parkhurst
Xstrata	<b>Ernest Henry</b>	Qld Magnesia	KG1 Mine
Barrick Gold	<b>Mine Osbourne</b>	Xstrata	Thiess Collinsville
Lihir Gold	<b>Mine Lihir Mine</b>	Xstrata	Newlands Mine
BHP Billiton	<b>Worsley Alumina</b>	BMA Coal	Riverside Mine
Resolute Mining	<b>Carpentaria Gold</b>	BMA Coal	Norwich Park Mine
Copper Co	<b>Mine Lady Annie</b>	Jellinbah Resources	Jellinbah Mine
NQM Gold	<b>Operations Pajingo</b>	Coal & Allied	Howick, Newdell,
Ok Tedi Mine	<b>Mine Site</b>	Coal & Allied	MTW North(Warkworth) MTW
	<b>Ok Tedi Mine</b>		South (Mt Thorley
Porgera Joint Venture	<b>Porgera Mine</b>	Peabody	Wambo CHPP
Sun Metals Corporation	<b>Korea Zinc</b>	Vale	Integra Coal (Camberwell
Kagara Zinc	<b>Mt Garnett Mine</b>	Worley Parsons /FMG	T155 Iron Ore Project
Kagara Zinc	Thalanga Process Plant	AMEC	Enhancement Project
Newmont Aisa Pacific	<b>Boddington Gold</b>	FMG Iron Ore	Port Hedland, Cloudbreak,
	<b>Mine</b>		Christmas Creek

# RKM Products on Site

Company	Country	Company	Country
Air Cargo Terminal	Malaysia	Borg Manufacturing	Australia
Asian Bintulu Fertilizer	Malaysia	KL Airport Services Sdn Bhd	Malaysia
Bakun Dam Plant	Malaysia	Panasonic	Malaysia
Box-Pack	Malaysia	Plywood in Sabah	Malaysia
Hirovani Johor	Malaysia	Rapiscan	Malaysia
Port	Malaysia	Rimbunan Hijau in Sawarak (Plywood) PT	Malaysia
Kenneson Brothers Lafarge	Malaysia	Arutmin	Indonesia
Malaysia Cement Malaysia	Malaysia	PT Bukit Asam	Indonesia
Cement Perwaja Steel Mill	Malaysia	PT Cement Baturaja PT	Indonesia
Quarry Plant Pioneer	Malaysia	Cement Bosowa PT	Indonesia
Seremban Cement Plant 1200 BW TNB	Malaysia	Cement Padang	Indonesia
Kapar Power Station	Malaysia	PT Indah Kiat Pulp & Paper PT	Indonesia
Manjung 4 Power Plant, TNB Janamanjung Dam	Malaysia	Indominco	Indonesia
Plant 1200 & 1500 BW	Malaysia	PT Krakatau Steel	Indonesia
EGAT Project 1000, 1200, 1400 BW	Thailand	Garimun Granite	Indonesia
	Thailand	Bosowa Cement 1200, 1400 BW	Indonesia
Mitr Phol Project 1200 & 1600 BW	Thailand	CLP Power Hong Kong 1600 BW	Hong Kong
Siam Cement Kang Koi	Thailand	Sarawak Wood Chip	Singapore
Siam City Cement	Thailand	Naga Power Plant	Philippines
		Pheapimex Group- Crushing Plant	Cambodia

# Customers - Unit Handling



**DAIFUKU**

**Rapiscan**<sup>®</sup>  
systems  
An OSI Systems Company

**BORG**

**AUTOVEYOR**<sup>®</sup>

**AUTOMATE**



**ICS  
AUTOTECH**



**Cheng Hua**  
Engineering Works Sdn. Bhd.  
(30508-W)



**AUTOFILL MANUFACTURING SDN BHD**  
583130-X



**Packaging Sales & Services (M) Sdn Bhd**

**RKM**

# Customers - Bulk Handling



# RKM Products

## *Carry Trough Idler*



- Option of 20-45 degrees angle for the side rollers.
- Can be used with steel rollers, impact rollers and low noise.
- Three or five roll design available.
- Offset or inline centre roller. Offset used to assist belt tracking for light and medium duty.
- Equal angle or pipe transom available.

## *Flat Carry Idler*



- Transom or bracket designs available.
- Used in skirt area of bin and feeder loading area.

## *Vee Return Idler*



- 2 roll vee or flat return idlers available.
- Straight transom or bended transom available

## *Flat Return Idler*



- Can be used with steel, rubber disc or spiral rollers

# RKM Products

## *Carry Trough Training Idler*



- Single direction carry trough training idler with guide rollers.
- Use to train conveyor belt back to its central position.
- Upper frame able to rotate in both direction on a limited 5 degrees.

## *Return Training Idler*



- Single direction return training idler with guide rollers.
- Use to train conveyor belt back to its central position.
- Upper frame able to rotate in both direction on a limited 5 degrees.

## *Bi-directional Carry Trough Training Idler*



- Suitable for conveyor line that runs in both directions.
- When the belt tracks of its centre and hits the friction roller, it serves as a brake and guides the upper frame to rotate.
- Upper frame able to rotate in both direction on a limited 5 degrees.

## *Bi-directional Return Training Idler*



- Suitable for conveyor line that runs in both directions.
- When the belt tracks of its centre and hits the friction roller, it serves as a brake and guides the upper frame to rotate.
- Upper frame able to rotate in both direction on a limited 5 degrees.

# RKM Products

## *Adjustable Transition Idlers*



- Used on the carry side of the conveyor to support the belt as it goes from trough to flat position.
- Maximum adjustable angle of 15 degrees.

## *Mine Structures Idler*



- Complete mine structures for underground mining.
- 3 roll suspended trough and 3 roll suspended return rollers.
- Surface finish with hot dip galvanizing.

## *Jackdown Idlers*



- Heavy duty design.
- Frame can be lowered under the belt for easy replacement of rollers.

## *Retractable Conveyor Idlers Rollers Frames*

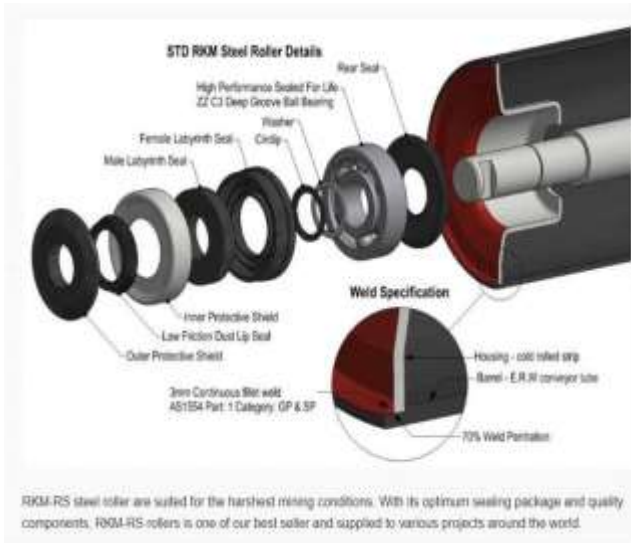


- Frames can be side out for easy replacement of rollers.
- Having the ability to safely and quickly replace cut or damaged rollers enables you save money by protecting your expensive conveyor belt from premature replacement.

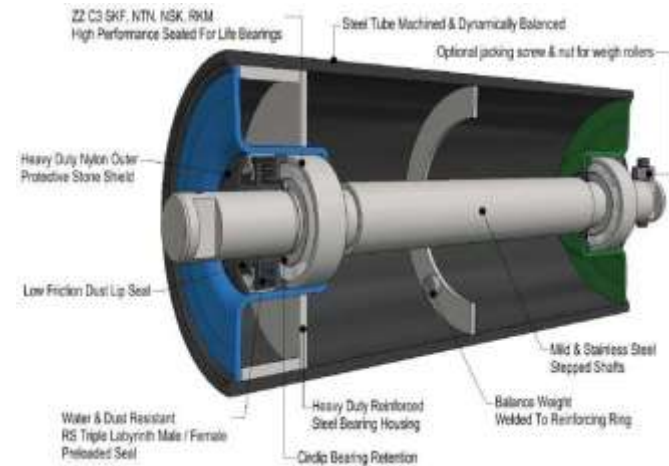


# RKM Products

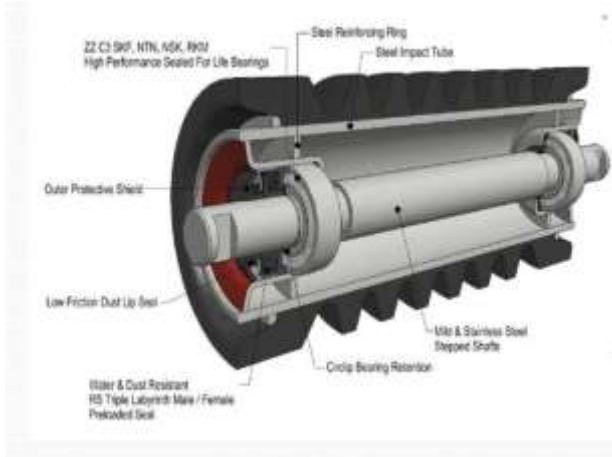
## RS Steel Roller



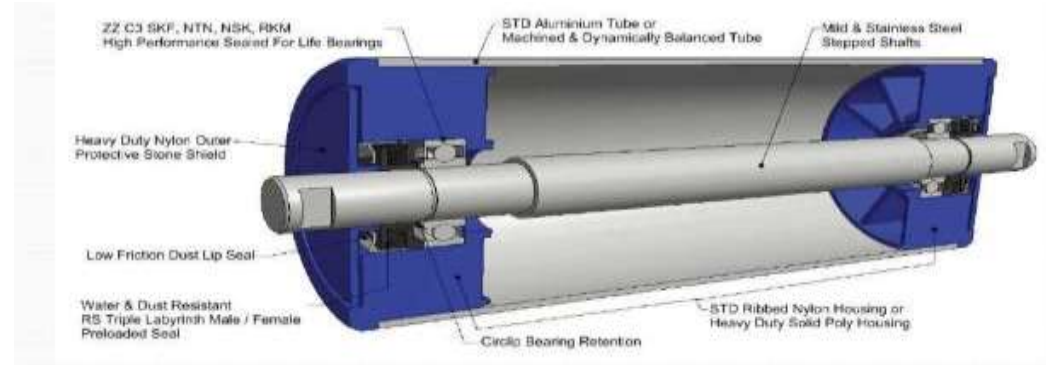
## Low Noise Roller



## Impact Conveyor Roller

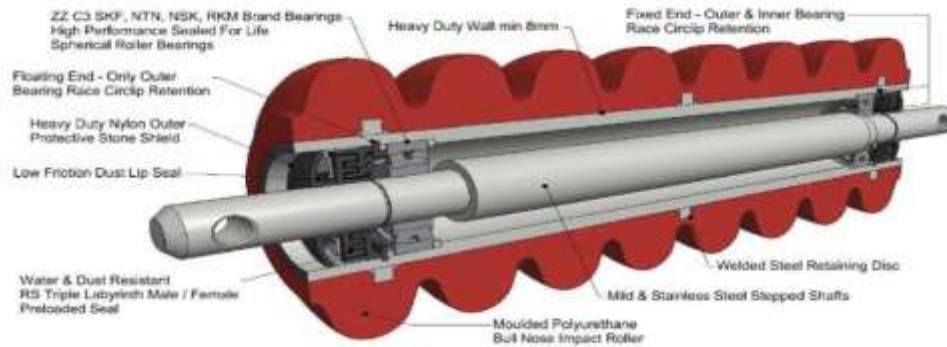
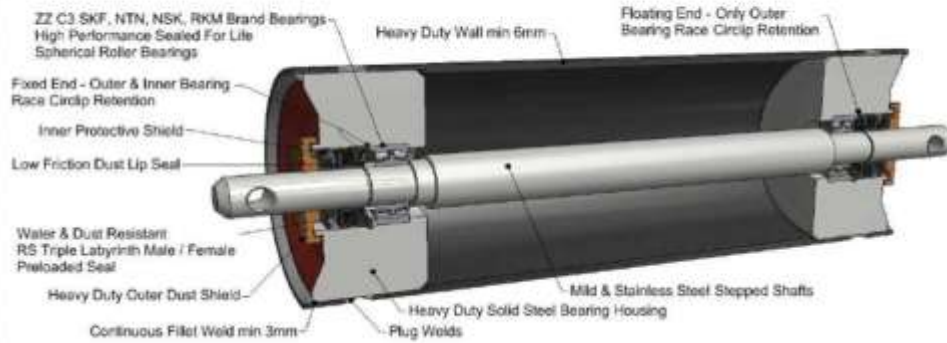


## Aluminium Roller



# RKM Products

## Heavy Duty Steel & Impact Rollers



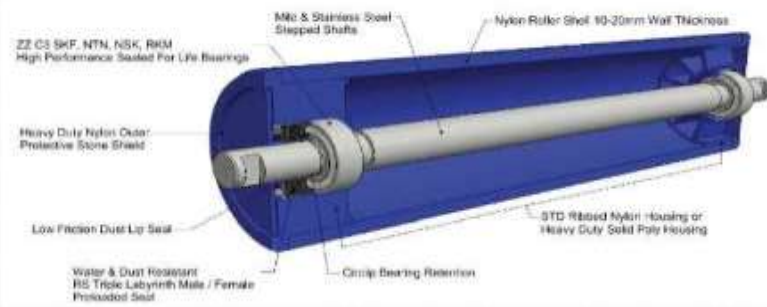
## Rubber Disc & Spiral Rollers



- Rubber disc and spiral roller are used on the return side of the belt as belt cleaners.
- Spaced rubber disc on roller are made from high performance rubber. Material build-up on centre of belt will be broken up by the rubber rings.
- Spiral steel welded on the spiral roller acts as a screw and pushes the build-up material on the centre to the edge of the belt.



## Heavy Duty Nylon Rollers



# RKM Products – Unit Handling



Gravity Roller



Gravity Roller with PVC End Cap



Gravity Groove Roller with PVC End Cap



Gravity Groove Roller with Press Bearing



Friction Accumulation Mild Steel Sprocket Roller



Fixed Drive / Friction Accumulation PVC Sprocket



Taper Mild Steel Roller with PVC End Cap



Taper Mild Steel Sprocket Roller



Taper PVC Sprocket Roller



Mild Steel / Nylon Skate Wheel



# QUALITY CONTROL



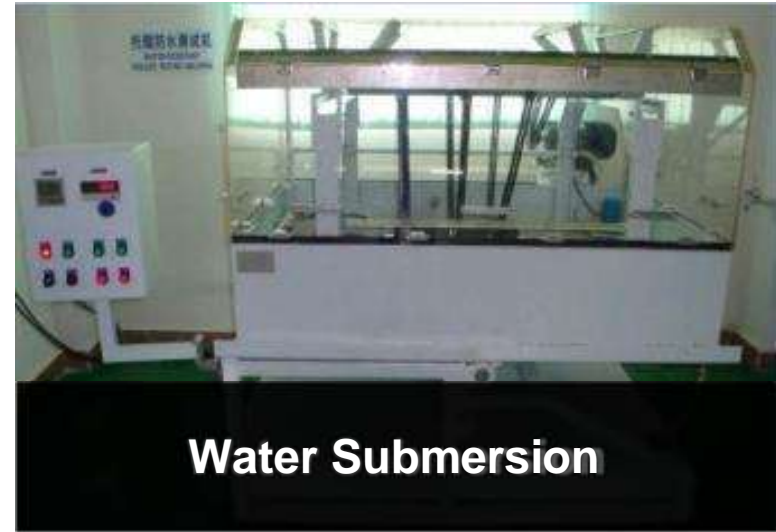
## We Test:

- Dynamic Balance
- Rim Drag
- Rotation Resistance
- Radial Runout
- Shaft Movement Dislocation
- Shaft Axial Loading
- Water Proof
- Dust Proof

# QUALITY CONTROL



# QUALITY CONTROL



Normal Time to Rotate the submerged roller is 24 & 72 hrs  
RPM = 600  
Tested Roller: Ø133 x 465RL x 6205zz

Duration of Rotation	Amount of Water Penetration	Acceptance Criteria
24 hrs	2.0gms	5.0gms
72 hrs	45.0gms	150gms

# PRODUCT ON SITE – FMG PORT HEDLAND, AUSTRALIA

- Complete December 2011
- Project Consultant: Worley Parsons
- Approximately 50,000 sets of idlers
- Type of products supplied:
  - Carry, return and transition idlers
  - Rigid suspended idlers
  - Carry and Return training idlers
  - Low noise carry rollers.
  - Wind guard and stone guards



# PRODUCT ON SITE – ASIA CEMENT, TAIWAN

- Completed July 2014.
- Low Noise roller instalment to reduce noise emission of conveyor.
- After switching to Rokonma low noise rollers the recorded values shows a reduction of 8-18 dBA.
- Conveyor detail:
  - 1000 belt width, 2000 ton per hour, 3.75 m/s belt speed



Asia Cement

亞洲水泥股份有限公司



## RKM Products in Power Plants

# TNB Manjung 4 - 1000MW Power plant, Malaysia

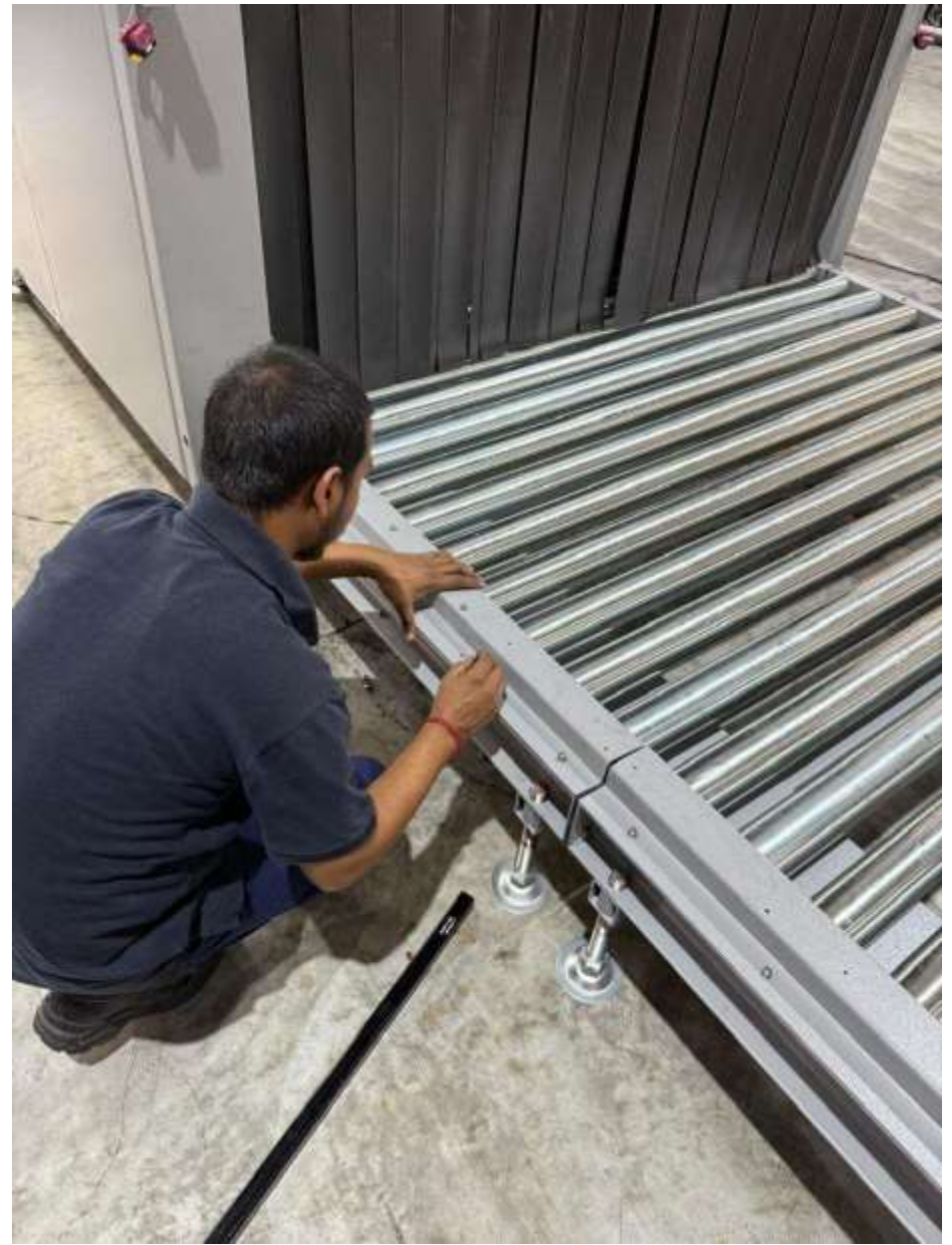
- Completed September 2013. Approximately 12,000 sets of idlers
- Project Consultant: Black & Veatch
- Conveyor details:
  - 1800 belt width, 3500 ton per hour, 4m/s belt speed
  - 1400 belt width, 1400 ton per hour, 2.5m/s belt speed
- Type of products supplied:
  - Carry and Vee return idlers
  - Carry and Return bi-directional training idlers
  - Weigh quality carry rollers
  - Impact rollers



# RKM Products in Ports G Quarry Conveyor Rollers



## RKM Products in Airport Conveyors System



# RKM Customers



# RKM

Rokonma (Malaysia) Sdn Bhd (123360-A)

2-S, Jalan Bukit Badak, Subang New Village, 40150 Shah Alam,  
Selangor Darul Ehsan, Malaysia.

Office: +6-03-78462554, 78462824, 78463355, 78475564,  
78475448

Whatsapp: +6-019- 6598232

Email: [sales@rokonma.com.my](mailto:sales@rokonma.com.my)

# THANK YOU